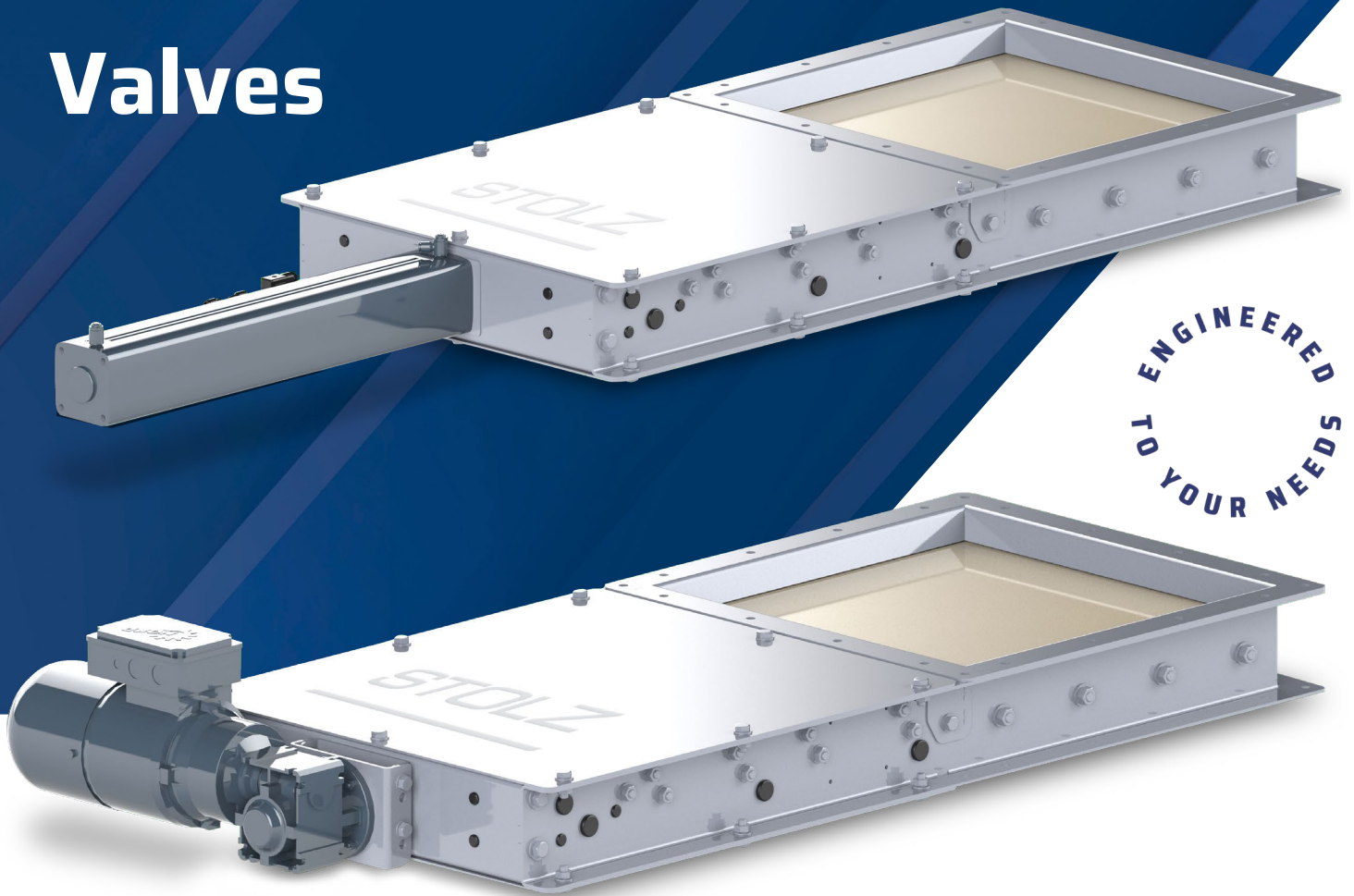


# STOLZ

## Valves



STOLZ valves are part of our range of equipment for gravity handling dedicated to the design of complete systems for flow direction of granular or powdered products in round or square sections.

A wide range of equipment is available to slow down, re-centre, equalise and limit breakage of the product being transported.

STOLZ valves are designed to isolate different product circuits.

### RANGE AND CONTROLS

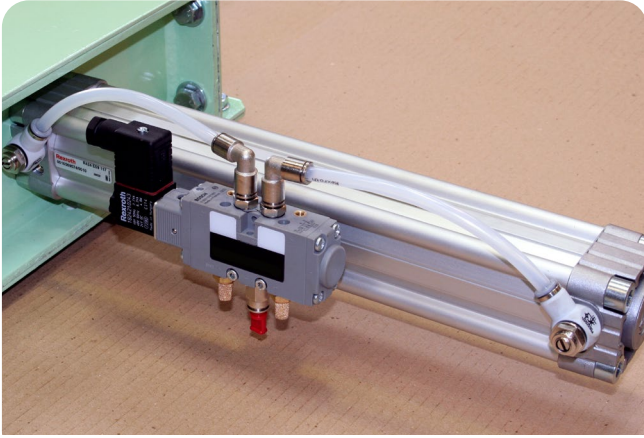
Our wide range can meet numerous requirements such as:

- Valves under silos
- Helmet valves under cells
- No retention valves under chain conveyor
- Standard valves under chain conveyor
- Valves on vertical sidewalls

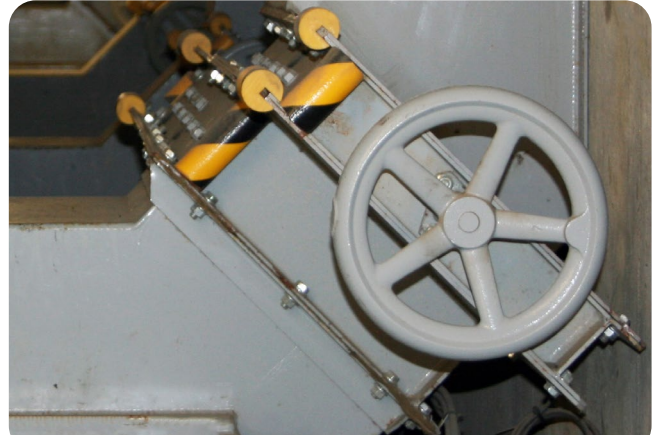
Almost all our valves can be supplied with:

- manual control with wheel or chain sprocket wheel
- pneumatic control on board distributor
- electric drive with torque limiter

The opening-closing detection is carried out by two inductive sensors.



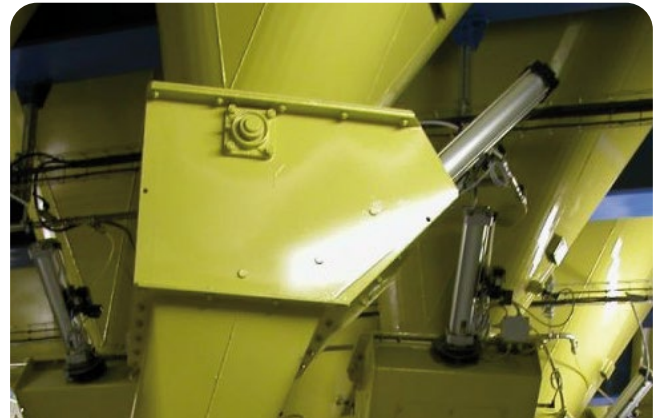
Pneumatic cylinder



Manual control



Valves under cells

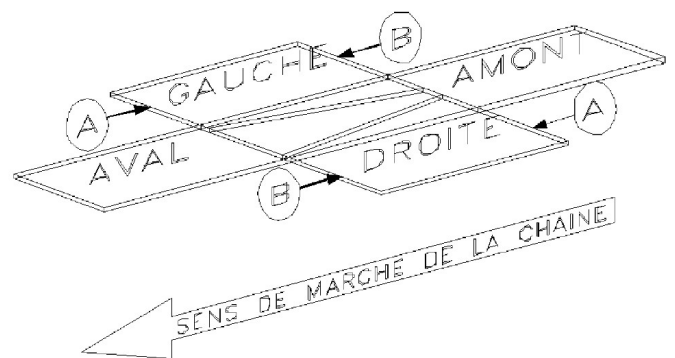


Helmet valves

## FITTING OF A VALVE IN THE CIRCUIT

Mounting rules of valves are the same as those applicable to pipes (including for valves marking).

For valves under chain conveyor, it is necessary to specify the direction of assembly of valves and the location of the steering wheel according to the diagram shown on the left.



# STOLZ

82 Route de Boisjean • 62170 • Wailly Beaucamp • France

Tél : +33 (0)3 21 90 05 05 • [contact.stolz@desmet.com](mailto:contact.stolz@desmet.com)

[www.desmet.com/stolz](http://www.desmet.com/stolz)

 /Stolz